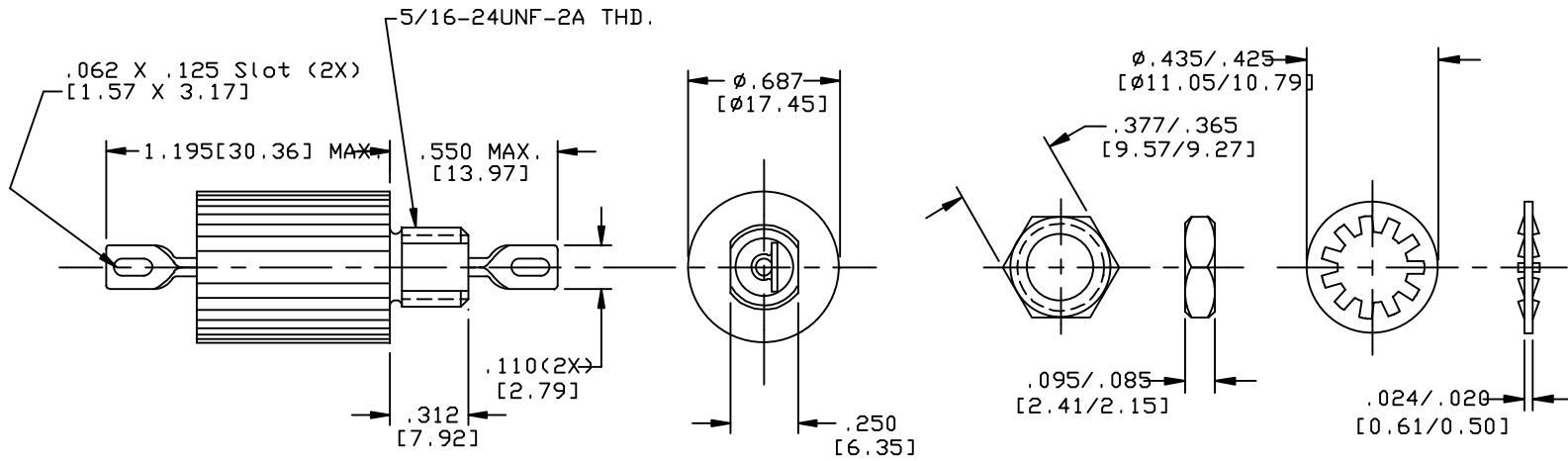


CASE FINISH	CURRENT (AMPS)	WORKING VOLTAGE				MAXIMUM DC RESISTANCE (OHMS)	MAXIMUM VOLTAGE DROP		MINIMUM CAPACITANCE (uF)	MIN. INSERTION LOSS PER MIL-STD-220 FULL LOAD, +25°C												
		-55°C TO +85°C		-55°C TO +125°C			DC	AC		14	30	50	75	100	150	300	500	1	10	100	1	10
		AC	DC	AC	DC					KHz	KHz	KHz	KHz	KHz	KHz	KHz	KHz	MHz	MHz	MHz	GHz	GHz
SOLDER	5	240@60Hz	450	240@60Hz	400	0.006	0.03	----	0.72	--	--	--	--	--	17	40	--	70	70	70	70	--

PART MARKING:
51-321-319
SCI DATE CODE

PACKAGE MARKING:
STANDARD


MARKING NOTES:
N/A



SCHMATIC

MTG. HARDWARE

NOTES:
1) MOUNTING TORQUE NOT TO EXCEED 7in-lbs.

																		37	REV	UNLESS OTHERWISE SPECIFIED DIMENSIONS ARE IN INCHES. [MILLIMETERS] DO NOT SCALE.	TOLERANCES UNLESS OTHERWISE SPECIFIED Fractions Dec. .xx± Dec. .xxx±0.10 Angles ±0° 30'	 SPECTRUM CONTROL INC. DWYKKAUFFMAN Ckd 2-17-97	ERIE, FAIRVIEW PENNSYLVANIA Description Pass EMI Filter
																		CN. 178447	CHANGE NOTICE NO.				